

IP 40 variable device mount - Matt diffuser - direct diffuse distribution.

Device mount made of galvanised, profiled sheet steel; surface coated with polyester resin. Fastening without tools with two integrated rotary catches. LED unit made of natural anodised extruded aluminium profile with end faces made of plastic. Variably positionable on the mounting rail. Housing colour traffic white RAL 9016; Direct, general diffuse light distribution. LED diffuser cover made of polycarbonate. Heat-resistant cables including connection cable 1 m and rapid installation plug connector with tool-less phase pre-selection and locating finger. They are exchangeable, permit modernisation and reliably prolong the service life of the overall system.

CHARACTERISTICS

Order number	18202014150
EAN number	4020863269600
Commodity code	94051190
Certification mark	IP 40, Protection class I, F, HACCP DIN10500/Food/IFS-application-related suitability/BRC, Indoor, CE
Impact resistance (IK rating)	IK08 (10°C bis 45°C)
Ambient temperatur	ta 10°C to 45°C
Warranty period	5 years
State funding programs	BEG - Federal funding for efficient buildings (valid only for Germany)

ELECTRICAL ENGINEERING

Controller	Electronic driver (1 pcs.)
System output	43W
Mains voltage	230V/50Hz
Circuit breakers (inrush current)	13 pieces/B10, 22 pieces/B16, 22 pieces/C10, 37 pieces/C16
Energy efficiency class/light source	B

LIGHTING TECHNOLOGY

Placement	LED, Colour rendering/Light colour CRI ≥ 80 / 4000K
Colour tolerance (MacAdam)	3SDCM
Nominal luminous flux	7004lm
LED service life	50000h L80/B10 (Tq 45°C)
Luminaire luminous efficiency	162lm/W
Beam angle	115° (C0) / 105 ° (C90)
UGR lat./long.	27.6 / 28.7

MECHANICS

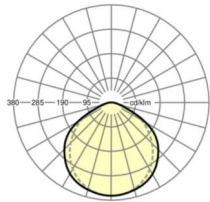
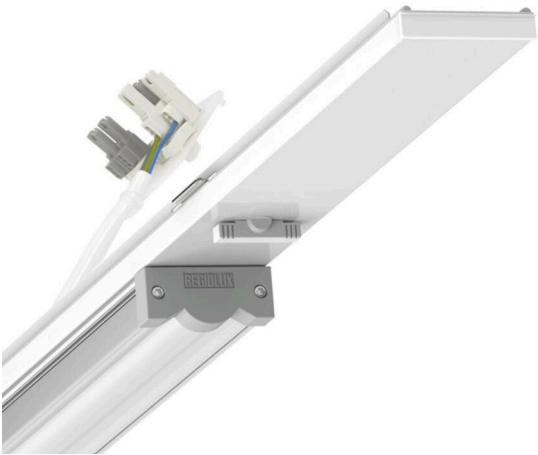
Housing colour	traffic white RAL 9016
Dimensions (LxWxH/DxH)	1531mm x 55mm x 43mm
Weight (net)	2kg
Type of installation	Mounting rail system installation

Dimensions

L	1531 mm	Length
B	55 mm	Width
H	43 mm	Height

DEEP-LINK

<https://www.regiolux.de/en/article/18202014150>



Reference	LED 7000lm 840
ηLB	100 %
Φ ↓/↑	100 % / 0 %
UGR lat./long.	27.6 / 28.7

